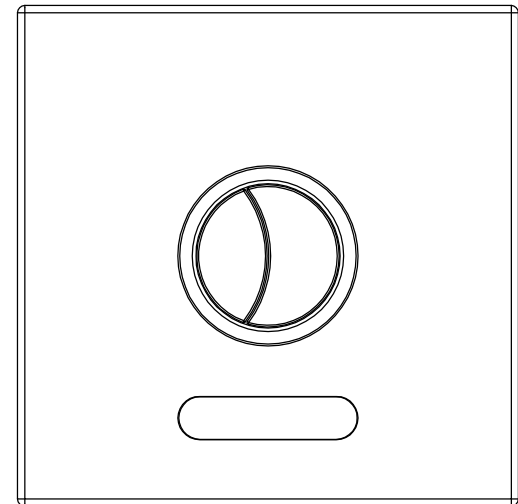




INSTRUCTION MANUAL


RL-AFS101DOMKDF

WC AUTO FLUSHING SYSTEM



SAFETY PRECAUTIONS

The precautions noted within this guide are intended to instruct you in the safe and correct use of the products and to prevent injuries and damage to yourself, other persons and property.

 **WARNINGS** The symbol indicates topics that could lead to death or serious injury if ignored or handled incorrectly.

WARNINGS

DANGEROUS VOLTAGE INSIDE

TO PREVENT FIRE OR SHOCK HAZARD, DO NOT EXPOSE THIS UNIT TO RAIN OR MOISTURE

IMPORTANT

- **PLEASE READ THIS MANUAL AND ENSURE THAT YOU UNDERSTAND THEM BEFORE INSTALLING OR OPERATING THE PRODUCTS.**
- **SENSOR EYES MUST BE FREE FROM DIRT AND STAINS IN ORDER TO OPERATE OPTIMALLY.**

DISCLAIMER

While every effort has been made to ensure that the information contained in this guide is accurate and complete, no liability can be accepted for any errors or omissions. Rigel reserves the right to change the specifications of the products and function described herein at any time without prior notice.

No part of this guide may be reproduced, transmitted, transcribed, or translated into any language without prior written permission of Rigel.

CUSTOMER SUPPORT

AFTER SALES SERVICE

Rigel's Customer Support Team can provide you with service visits, sale of spare parts, and general product help and advise.

SPARE PARTS

Spare parts for all Rigel products are available for up to 10 years after the product's date of final manufacture. You should only purchase spare parts directly from our Customer Support Department, or from Rigel's approved stockists or merchants to ensure authenticity and to maintain validity of your warranty.

NOTE: As a safety precaution, spare parts that require exposure to voltage from the power grid mains will only be sent to qualified personnel.

SERVICE GUARANTEE

All servicing provided by Rigel will be performed by a trained engineer or agent, with genuine spare parts, and will come with a 6-month warranty on the repair. Servicing outside of the product's warranty will be charged at a reasonable cost.

CONTACT US

RIGEL TECHNOLOGY (S) PTE LTD

No. 12 Kaki Bukit View, Kaki Bukit Techpark II Singapore 415948

Tel: (65) 6844 0660 Fax: (65) 6844 0112

Office Working Hours: 8:30am - 6.00pm (Monday to Thursday)

8:30am - 5.30pm (Friday)

E-mail: sales@rigel.com.sg

Website: www.rigel.com.sg

RIGEL TECHNOLOGY (M) SDN BHD

Wisma Rigel, 16 & 18, Jalan 3 / 33B, MWE Commercial Park, 6 1/2 Miles, Off Jalan Kepong,

52000 Kuala Lumpur, Malaysia

Tel: (603) 6258 6016 Fax: (603) 6258 5498

Office Working Hours: 8:30am - 6.00pm (Monday to Friday)

E-mail: sales@rigel.com.my

Website: www.rigel.com.my

RIGEL TECHNOLOGY (NINGBO) CO. LTD

No 18, Xingye Road 2, Ningbo Beilun Free Trade East Zone, 315800 Ningbo, Zhejiang, China

Tel: (86) 574 5626 1688 Fax: (86) 574 5626 1588

RIGEL TECHNOLOGY CERAMICS (SICHUAN) CO. LTD

Shuanghechang, Anfu Town, Naxi District, 646300 Luzhou City, Sichuan, China

Tel: (86) 830 4270 155 Fax: (86) 830 4270 636

IMPORTANT SAFETY INFORMATION

- 1) Products manufactured in Rigel are safe and without risk provided that they are installed, used and maintained in good working order in accordance with our instructions and recommendations.
- 2) This appliance MUST be earthed.
- 3) There are no user serviceable parts in this product, only a competent tradesperson should dismantle the unit to carry out repairs.
- 4) If you suspect any malfunctioning of this unit, switch off the electricity supply and inform your supplier or installer immediately.
- 5) Any person who may have difficulty understanding or operating the controls of the product should be supervised while using the appliance. Particular consideration should be given to the young, the elderly, the infirm or anyone inexperienced in the correct operation of the controls.



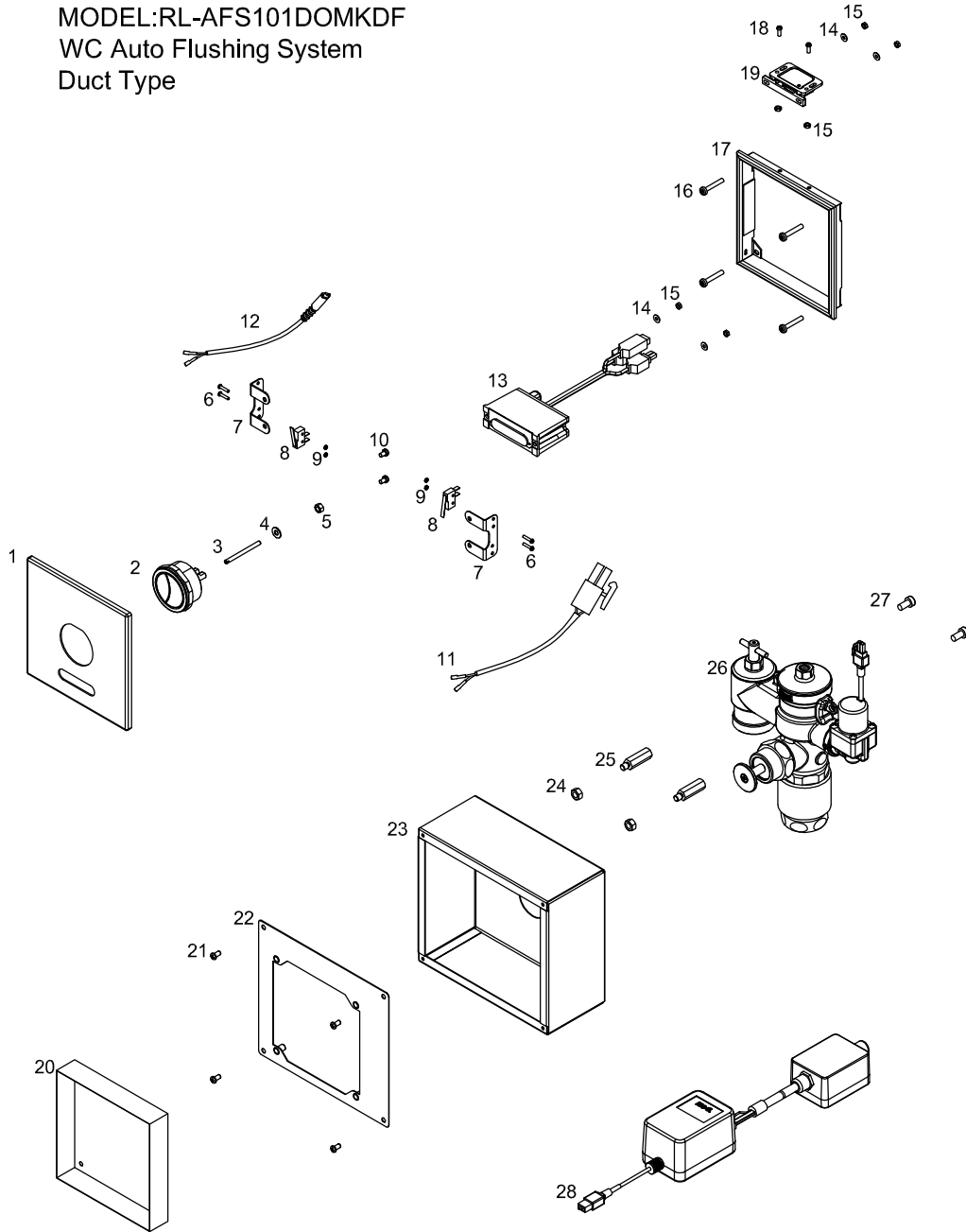
****IMPORTANT****

There should not be any obstruction within a radius of 80mm around the sensor eye.

There also should not have any protrusions of walls, objects or otherwise below the front panel within the 80mm radius, referenced from the plane of the front panel.

This is to avoid interruption of the sensor beam coverage to ensure reliable operation.

MODEL:RL-AFS101DOMKDF
 WC Auto Flushing System
 Duct Type



CUSTOMER SERVICES

Please read the following warranty information thoroughly and retain this document for future use and reference.

Rigel Technology (S) Pte Ltd ("Rigel") warrants the products against any defect of materials or workmanship for a period of 1 year from the date of purchase.

Within the warranty period, all defective parts will be repaired and/or replaced free of charge.

To be eligible for free repair and/or replacement, any service work on the product must be undertaken by Rigel or our approved agents.

Service under this warranty will not affect the warranty expiry date, and any warranty on exchanged parts or products will end when the warranty expires.

This warranty is only applicable for products properly installed and operated in accordance to the operating procedures stated in the instruction manual.

This warranty does not extend to washroom accessories or other peripheral items.

Rigel's responsibility under this warranty does not apply to damage/defects caused by:

- Misuse, negligence, or accidents.
- Public abuse or vandalism.
- Repairs or alterations not authorized by or performed without consultation from Rigel.
- Repairs or alterations that do not comply with Rigel's installation instruction.
- Repairs or alterations that were not performed with genuine parts supplied by Rigel.

Rigel will not be held liable for any incidental or consequential damages, including loss of profits or savings, arising from the use or misuse of the products.

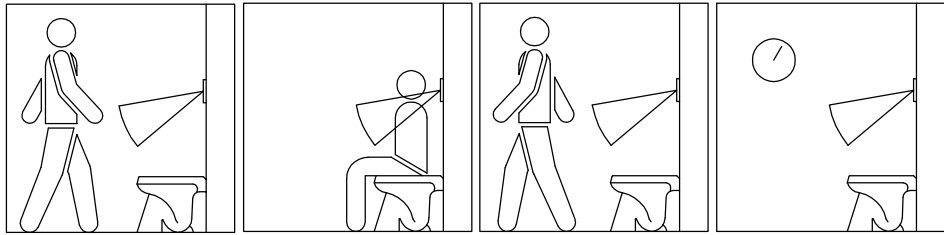
The terms in this warranty are only valid after:

- Full payment has been made.
- The official Warranty Card is completely and correctly filled out in ink and returned to Rigel within 14 days of purchase. Loss or misplacement of the Warranty Card, or unauthorized amendments to the Warranty Card, shall render the warranty null and void.

This warranty is in addition to your statutory and other legal rights.

OPERATING PROCEDURE

WC SENSOR FLUSHING SYSTEM



1. Time delay of 7 sec feature prevents false operation.
2. System on standby once a person is detected.
3. Time counting begins when a person moves away.
4. After 5 sec the flushing will start to prevent multiple flushing.

GENERAL SPECIFICATIONS

WC FLUSHING SYSTEMS

DESCRIPTION	WATER CLOSET INTEGRATED SENSOR FLUSH VALVE - CONCEALED BOX TYPE
SENSING DISTANCE	800 to 900mm
DISCHARGE VOLUME	3.5 litres & 2.5 litres / 4.5 litres & 3 litres
OPERATING VOLUME	1-8 Bar
INLET CONNECTION	BSPT 1"
OUTLET CONNECTION	Ø32mm

NOTE Flush valve is not suitable for acidic water condition.

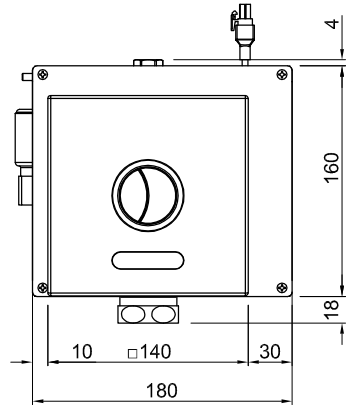
PART LIST:RL-AFS101DOMKDF

S/N	PART NO.	DESCRIPTION	QTY
1	RM-FPN101D	FRONT PANEL 101D	1
2	SA-BT40X50CR	BUTTON SET, CR	1
3	RM-BTFB40X50DF120	BRASS ROD DF BUTTON	1
4	RM-WASM5SPR	SPRING WASHER, M5, SS	1
5	RM-NUTM5	NUT, M5, SS	1
6	RM-SCM2.5X12PP	M2.5 X 12 PAN HEAD SCREW	4
7	RM-BRKDR021	MICROSWITCH BRACKET	2
8	RM-SW5GL111	MICROSWITCH	2
9	RM-NUTM2.5	NUT, M2.5, SS	4
10	RM-SCM4X8PP	M4 X 8 PAN HEAD SCREW	2
11	RM-CABSW-AC	CABLE ASSY FOR ACSMT MSW	1
12	RM-CABSW-DS	CABLE ASSY FOR ACSMT MSW	1
13	SA-DSACMTWCDF	SENSOR EYE W/ CONTROLLER, DS-TYPE, WCDF	1
14	RM-WASM3TH	TOOTH WASHER, M3	4
15	RM-NUTM3	NUT, M3, SS	6
16	RM-SCM4X25PP	M4 X 25 PAN HEAD SCREW	4
17	RM-FRM101D	FRAME	1
18	RM-SCM3X8PP	PAN HEAD SCREW	2
19	RM-KIT-CTC3203	DOOR CATCH SOUTHCO C3-203	1
20	RM-TMP129X129	COVER PLATE , 129 X 129mm	1
21	RM-SCTP4X8	M4X8 TAP SCREW	4
22	RM-FCV202CLMA003	AFS-202CLMAB URINAL BOX COVER PLATE	1
23	RM-CASNP0721	BOX	1
24	RM-NUTM6	NUT, M6, SS	2
25	RM-STUDRM6X28	STUD ROD, M6X28	2
26	SA-FC101AC-SL1	FLUSH VALVE ASSEMBLY-70MM, WC C/W AC SOLENOID VALVE AND LONG SINGLE BUTTON	1
27	RM-SCM6X12PP	M6X12 PAN HEAD SCREW	2
28	SA-PS18V	POWER SUPPLY 1AMP	1

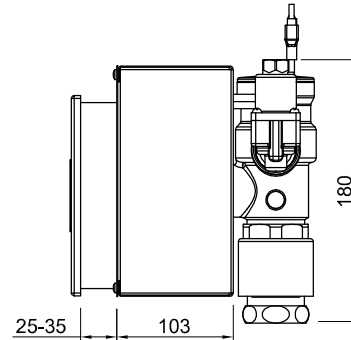
RL-AFS101DOMKDF

PRODUCT DIMENSION

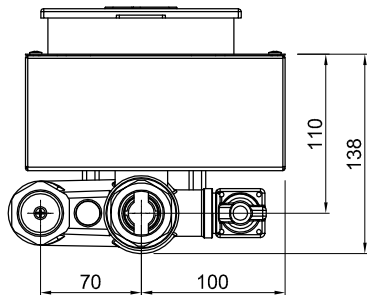
FRONT VIEW



SIDE VIEW



BOTTOM VIEW



*All dimensions are in mm

TROUBLE SHOOTING GUIDE

AC POWERED -AFS101 (WC)

PROBLEM	CAUSE	PHENOMENON	REMEDY
No flush	Inlet blocked; Power supply failure; Stop valve closed tightly Sensor is not in stand-by mode No water supply Sensor eye unit is defective	No water in pipe; Circuit not working Person is within the set sensing distance range	Check inlet condition; Check and repair adapter and control circuit; Check and fully open top valve; Ensure that the person moves away after yellow light is on. Wait for 5 sec when light changes from steady to blink Check water supply or ensure that valve stopcock T-handle is open Replace sensor unit
Sensor light is off	Power supply failure; Sensing distance is too short; Sensor eye unit is defective		Check AC adaptor, connections, power, outlet and switch; Turn on power or replace AC adaptor Adjust sensing distance** Replace sensor unit
Continuous blinking of sensor light	Wrong connection of solenoid connector		Ensure that solenoid connector (black/white) is connected to solenoid and not to push button connector
Manual push button pressed long time, water flushing short time	Microswitch activate; Hydraulic switch activate; Direct trigger	Water pressure is not high enough	Adjust discharging timing setting (same as quick stop flushing); Check and clean hydraulic bypass (switch, tubing and fitting); Replace by non-returnable piston or increase water pressure

TROUBLE SHOOTING GUIDE

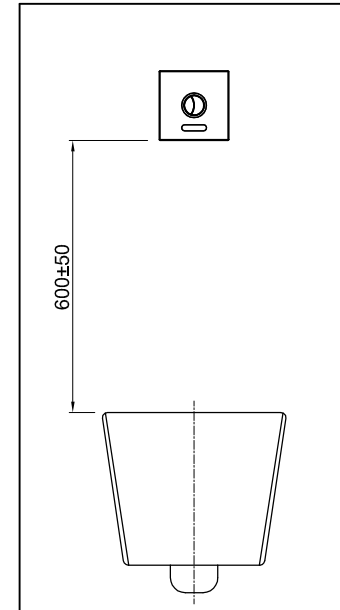
AC POWERED -AFS101 (WC)

NORMAL OPERATION			
Red blinking light indicates user detection which stops after 5 blinks. System in standby mode and flushing begins when person is no longer within the set sensing distance range.			
PROBLEM	CAUSE	PHENOMENON	REMEDY
Non-stop discharging	Control circuit failure;	Non-stop and leaking outside	Disconnect circuit from solenoid valve to stop flow; Replace sensor unit; Check discharging volume control*
	Broken tubing or fitting;		Stop water supply by turning the stopcock T-handle clockwise; Replace tubing and fitting; Disassemble valve, check and clean plunger and diaphragm
	Solenoid valve failure; Flush valve failure;	Non-stop and no leaking	Take out piston from flush valve, check and clean especially the filter and orifice. If problem continues, check the rubber parts if no damage, replace piston
	Hydraulic bypass failure		Check hydraulic switch (optional).
Quick stop on flushing	Very high pressure;		Check the dynamic flow pressure; Adjust screw set on top of the flush valve cap
	Control timing is very short		Adjust discharging volume setting;
Slow stop on flushing	Inlet jammed; Stop valve strainer stuck; Dirty piston, stuffed orifice;	Leaking outside	Check inlet; Shut off water from inlet, take out and clean stop valve;
	Broken piston seal ;		Check and replace piston sealing;
	Broken tubing or fitting; Control timing is too long		Check and replace tubing or fitting; Adjust control timing setting

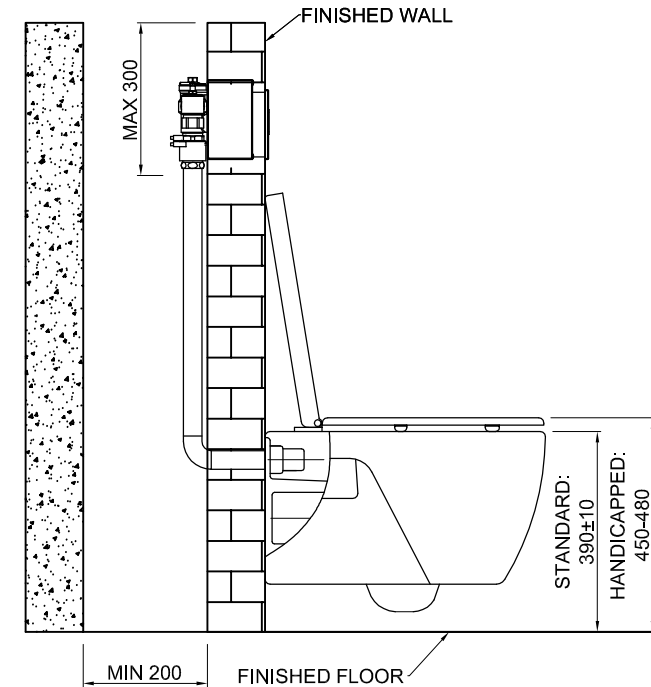
RL-AFS101DOMKDF

INSTALLATION DETAIL

FRONT VIEW



SIDE VIEW



STANDARD (*)
390±10 from floor finishing to the rim of water closet.

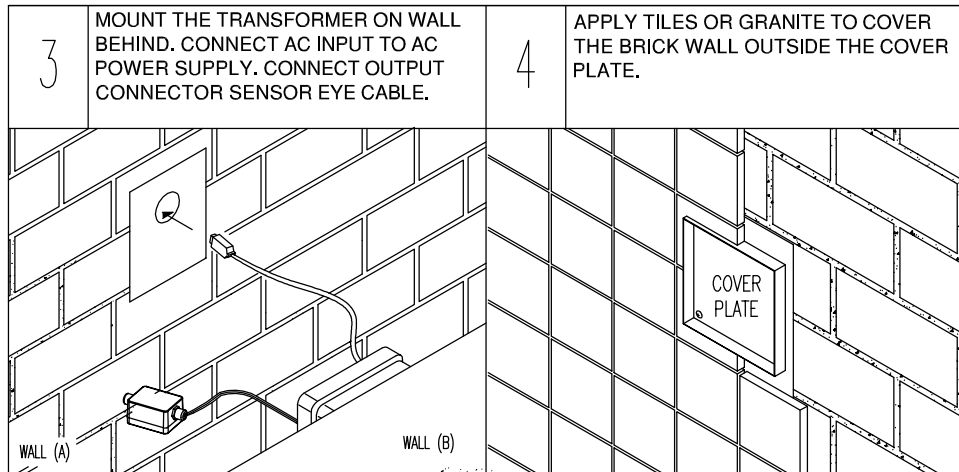
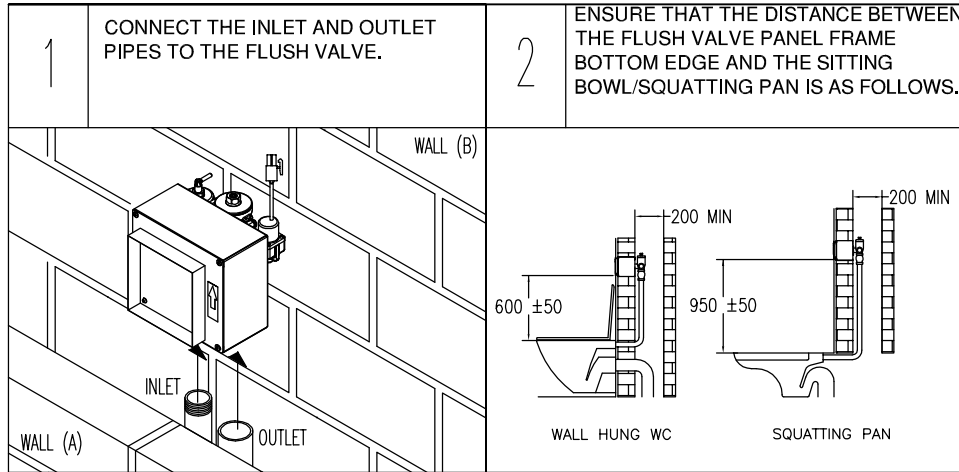
HANDICAPPED(#)
450-480 from floor finishing to the top of the water closet seat.

INSTALLATION INSTRUCTIONS

(Items shown are illustrations only, and therefore may not reflect actual model supplied)

AUTOMATIC FLUSHING SYSTEM - WC

PLEASE READ THE INSTRUCTIONS CAREFULLY BEFORE DOING ANY INSTALLATION.



IMPORTANT NOTE 1:

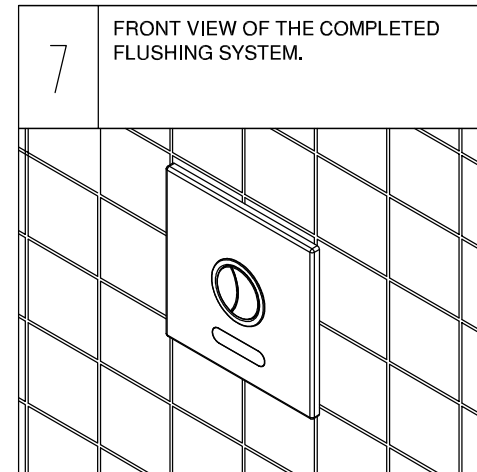
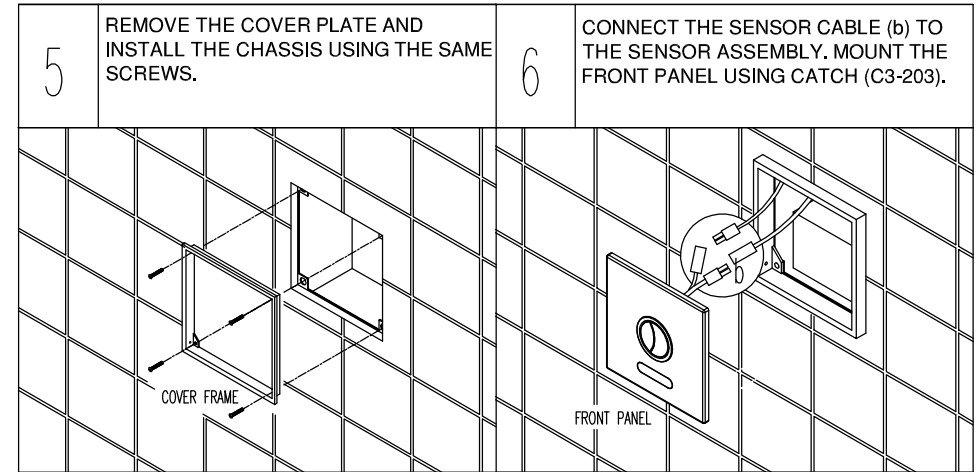
TILING HEIGHT MUST NOT BE SHALLOWER THAN THE TOP RIM OF THE TEMPLATE / COVER PLATE PROVIDED. RIGEL WILL NOT BE HELD RESPONSIBLE FOR ANY NON-COMPLIANCE TO THIS CLAUSE.

INSTALLATION INSTRUCTIONS

(Items shown are illustrations only, and therefore may not reflect actual model supplied)

AUTOMATIC FLUSHING SYSTEM - WC

PLEASE READ THE INSTRUCTIONS CAREFULLY BEFORE DOING ANY INSTALLATION.



IMPORTANT NOTE 2:

A MULTIPOLE SWITCH SHOULD BE FITTED BETWEEN THE FLUSHING SYSTEM AND THE MAINS CONNECTION, WITH A BREAKER POINT GAP OF AT LEAST 3MM (1/8") & FROM 15A TO 250V.